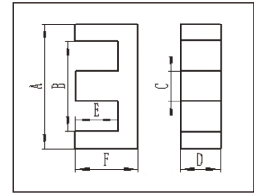




MnZn

软磁铁氧体磁芯

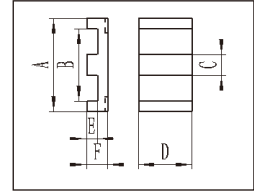
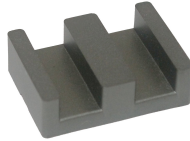
MnZn soft ferrite core



型号 Type	尺寸 Dimensions(mm)						磁芯参数 Core Parameters				Wt (g/pr)
	A	B	C	D	E	F	Cl(mm ⁻¹)	Le(mm)	Ae(mm ²)	Ve(mm ³)	
EE13/7/4	12.6±0.45	8.90+0.60	3.70-0.30	3.70-0.30	4.50+0.30	6.50-0.20	2.394	29.7	12.4	369	1.83
EE13/6/6	13.00±0.30	10.00min	2.75±0.15	6.00±0.20	4.60±0.10	6.00±0.15	1.81	30.2	16.7	505	2.62
EE13/6/10	12.95±0.30	9.15±0.25	3.55±0.15	9.80±0.20	4.80min	6.60min	0.855	30	35	1050	5.2
EE14/7/10	14.00±0.30	10.30min	3.80±0.15	9.90±0.20	4.65min	6.45min	0.89	31.8	35.7	1135	5.7
EE16/7/5	16.00±0.30	11.70min	4.00±0.20	4.90±0.20	5.30±0.20	7.30±0.20	1.81	35.5	19.8	695	3.5
EE16/7/7	16.00±0.30	11.70min	4.00±0.20	6.90±0.20	5.30±0.20	7.30±0.20	1.286	35.5	27.6	979	5
EE19/8/5	19.10±0.30	14.20min	4.55±0.15	4.90±0.20	5.60±0.20	7.95±0.20	1.74	39.5	22.8	899	4.4
EE19/8/10	19.10±0.30	14.20min	4.55±0.15	10.00±0.20	5.60±0.20	7.95±0.20	0.85	39.6	46.1	1829	8.85
EE19.3/13.6/5	19.30±0.40	14.60min	5.10-0.50	5.10-0.50	11.40±0.30	13.60±0.30	2.862	62.6	21.9	1370	6.84
EE20/10/6A	20.20±0.40	14.10min	5.90-0.40	5.65±0.25	7.20±0.20	10.00±0.20	1.408	46.2	32.8	1514	7.3
EE20/10/9	20.20±0.40	14.10min	5.90-0.40	9.00-0.40	7.20±0.20	10.00±0.20	0.942	46.4	49.3	2285	11.45
EE20/10/11	20.20±0.40	14.10min	5.70±0.20	10.75±0.25	7.20±0.20	10.00±0.20	0.787	46.7	59.3	2769	14
EE20/13/15	20.50±0.60	15.40min	4.85±0.15	14.80±0.20	4.20±0.20	6.60±0.20	0.506	35.4	69.9	2470	12.9
EE20/15/16	20.00±0.40	14.40min	5.70±0.20	15.70±0.20	4.70±0.20	7.60±0.20	0.419	36.8	87.9	3236	16.2
EE22/10/6	22.00±0.40	16.00min	5.75±0.25	5.75±0.25	5.60±0.20	9.70±0.20	1.186	43	36.3	1560	8.55
EE25/8/15	25.00±0.50	17.80min	7.50±0.20	15.00±0.20	4.70±0.20	8.30±0.20	0.4	41.3	103.7	4287	22.1
EE25/10/6	25.40±0.50	18.55min	6.35±0.20	6.35±0.30	6.90±0.20	10.00±0.20	1.258	50.2	39.9	2001	10
EE25/10/13	25.40±0.50	18.55min	6.35±0.20	12.50±0.30	6.90±0.20	10.00±0.20	0.639	50.2	78.5	3939	19.9
EE25/10/25	25.40±0.50	18.70min	6.30±0.20	25.00±0.35	6.65±0.20	9.70±0.20	0.32	49.3	152.3	7516	40
EE25/10.5/7	25.05±0.75	17.50min	7.25±0.25	7.20±0.30	6.90±0.20	10.50±0.20	0.977	49.7	50.9	2533	12.8
EE25/12.5/7	25.05±0.75	17.50min	7.25±0.25	7.20±0.30	8.95±0.25	12.55±0.25	1.139	57.9	50.9	2946	14.7
EE25/12.5/9	25.05±0.75	17.50min	7.25±0.25	8.85±0.25	8.95±0.25	12.55±0.25	0.927	57.9	62.5	3622	18.2
EE25/12/11	25+0.8/-0.2	18.30±0.30	7.50-0.50	11.00-0.50	9.05±0.25	12.65±0.25	0.743	57.7	77.7	4482	22
EE25/13.5/11B	25.05±0.75	17.50min	7.25±0.25	11.00-0.50	9.70min	13.40min	0.81	62	76.4	4743	24.52
EE25/16/6	25.40±0.50	18.80min	6.35±0.30	6.35±0.25	12.70±0.3	15.90±0.20	1.735	72.9	42	3061	14.4
EE26/17/10	26.50±0.50	18.60min	7.20±0.30	10.60±0.30	13.20±0.25	17.20±0.25	0.91	76.62	78.91	6046	20.6
EE27/9.7/13	27.40±0.50	20.90min	6.35±0.20	12.65±0.25	6.95±0.20	10.00±0.20	0.675	52.5	77.7	4076	20.6
EE28/10/10	28.20±0.70	18.60min	7.20±0.20	10.60±0.20	6.50±0.20	10.00±0.20	0.621	49.6	79.9	3960	20
EE28/11/22	28.00±0.55	18.93min	7.70±0.15	22.35±0.4	5.70±0.25	10.45±0.25	0.252	48.29	191.5	9246	49
EE30/13/8	30.00±0.60	19.80min	10.70±0.30	8.10±0.20	8.20±0.20	13.15±0.20	0.715	58.1	81.3	4727	24.5
EE30.5/13/9	30.70±0.60	21.60min	9.40±0.30	9.40±0.20	8.90-0.50	13.20±0.20	0.733	61.6	84	5176	26.5
EE30/13/11	30.00±0.60	19.80min	10.70±0.30	10.70±0.30	8.20±0.20	13.15±0.20	0.541	58.1	107.4	6244	32.4
EE30/15/7	30.10±0.70	19.50min	6.95±0.25	7.05±0.25	9.65±0.25	15.00±0.20	1.068	64.6	60.5	3911	21.1
EE30/21/11	30.00±0.60	19.80min	10.70±0.30	10.70±0.30	16.30±0.30	21.25±0.25	0.84	90.4	107.6	9732	49
EE32/16/9	32.10±0.50	23.00min	9.20±0.30	9.15±0.35	11.60±0.30	16.10±0.30	0.916	74.7	81.6	6093	32.7
EE34/10/10	33.70±0.50	25.10min	7.80±0.30	9.90±0.15	6.40±0.20	10.40±0.20	0.703	55.8	79.8	4492	22
EE35/14/13	35.00±0.60	25.50min	9.40±0.20	12.15±0.25	9.65±0.15	14.25±0.20	0.614	70.2	114.3	8026	39.4
EE35/11/15	35.00±0.60	24.50min	10.00±0.30	15.00±0.30	6.20±0.25	11.20±0.25	0.37	55.5	150	8326	43.6
EE35/11/30	35.00±0.60	24.50min	10.00±0.30	30.00±0.30	6.20±0.25	11.20±0.25	0.19	55.5	300	16652	87
EE35/15/9	35.30±0.60	25.50min	9.00±0.30	9.30±0.30	9.90±0.30	14.80±0.30	0.821	71.4	87	6212	30.66
EE35/19/10	35.70-1.20	24.50min	10.00±0.30	10.00±0.30	13.80±0.30	18.80±0.30	0.86	85.6	99.5	8517	43.6
EE35/21/11	35.00±0.70	23.00±0.50	12.70±0.25	10.70±0.25	16.25±0.25	21.25±0.25	0.73	92.6	126.5	11722	59.7
EE41/17/12	41.00±1.00	29.00min	12.00+0.50	12.00+0.50	10.50+0.50	16.50+0.50	0.581	79	136	11736	56
EE42/21/20	43.00-1.70	29.50+1.40	12.20-0.50	20.00-0.80	14.80+0.60	21.00±0.20	0.417	97.3	233.4	22708	118
EE47/20/16	46.90±0.80	31.72min	15.62±0.25	15.62±0.25	12.20±0.20	19.63±0.20	0.382	89.1	233.1	20762	108
EE55/28/21	56.20-2.10	37.50+1.50	17.20-0.50	21.00-0.80	18.50+0.80	27.50±0.30	0.35	124	353	44000	218
EE55/28/25	56.20-2.10	37.50±1.50	17.20-0.50	25.00-0.80	25.00-0.80	27.50±0.30	0.239	123	420	52000	260
EE65/32/27	65±1.30	44.20min	20.00-0.70	27.40-0.80	27.40-0.80	32.80-0.60	0.274	146.9	536.7	78830	400
EE70/33/30	70.75±1.50	48.00+1.50	21.50±0.50	30.50±0.60	30.50±0.60	33.20±0.40	0.224	149.9	669	100277	500
EE70/33/36	70.75±1.50	48.00+1.50	21.50±0.50	35.10±0.60	35.10±0.60	33.40-0.50	0.193	149.8	775.5	116179	587

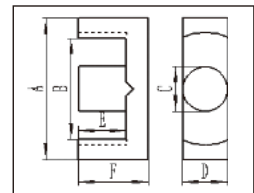


ELP型磁芯
ELP Type Core



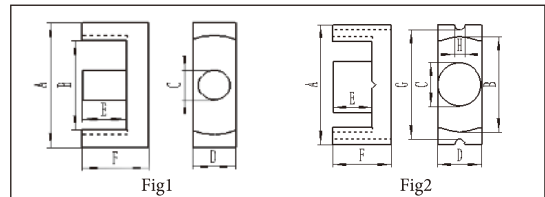
型号 Type	尺寸 Dimensions(mm)						磁芯参数 Core Parameters				Wt (g/pr)
	A	B	C	D	E	F	C1(mm ⁻¹)	Le(mm)	Ae(mm ²)	Ve(mm ³)	
ELP18/4/10	18.00±0.35	14.00±0.30	4.00±0.10	10.00±0.20	2.00±0.10	4.00±0.10	0.498	20.3	40.8	830	4.78
ELP22/6/16	21.80±0.40	16.80±0.40	5.00±0.10	15.80±0.20	3.20±0.10	5.70±0.10	0.324	26.1	80.4	2100	13
ELP32/6/20	31.75±0.64	24.9min	6.35±0.13	20.32±0.41	3.18±0.20	6.35±0.13	0.323	41.7	129	5380	26
ELP38/8/25	38.10±0.76	30.32min	7.60±0.20	25.40±0.51	4.45±0.13	8.26±0.13	0.272	52.6	194	10200	50
ELP43/10/8	43.20±0.90	34.7min	8.10±0.20	27.90±0.60	5.40±0.13	9.50±0.13	0.276	61.7	225	13900	70
ELP58/11/38	58.40±0.76	50.00min	8.10±0.20	38.10±0.80	6.50±0.13	10.50±0.13	0.268	81.2	305	24600	124
ELP64/10/50	64.0±1.30	53.80±1.10	10.20±0.20	50.80±1.0	5.10±0.13	10.20±0.13	0.156	79.7	500	40700	200

ETD型磁芯
ETD Type Core



型号 Type	尺寸 Dimensions(mm)						磁芯参数 Core Parameters				Wt (g/pr)
	A	B	C	D	E	F	C1(mm ⁻¹)	Le(mm)	Ae(mm ²)	Ve(mm ³)	
ETD29	29.80±0.80	22.70±0.70	9.50±0.30	9.50±0.30	11.00±0.30	15.80±0.20	0.930	70.7	76.3	5396.5	27.65
ETD34	35.00-1.60	25.60±1.40	11.10-0.60	11.10-0.60	11.80+0.60	17.30±0.20	0.815	79.0	97.0	7665.2	39.45
ETD39	40.00-1.80	29.3+1.6	12.80-0.60	12.80-0.60	14.20+0.80	19.80±0.20	0.732	92.2	125	11500	30
ETD49	49.00±0.80	36.30min	17.25±0.30	17.25±0.30	18.80±0.30	27.00±0.30	0.491	118.6	241.8	28684	149.94
ETD59	59.80±1.30	44.70±1.10	21.65±0.45	21.65±0.45	22.50±0.40	31.00±0.20	0.383	140.5	367.4	51634.5	266.00

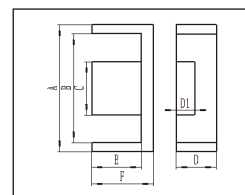
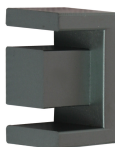
EC型磁芯
EC Type Core



型号 Type	图例 Fig	尺寸 Dimensions(mm)						磁芯参数 Core Parameters				Wt (g/pr)
		A	B	C	D	E	F	C1(mm ⁻¹)	Le(mm)	Ae(mm ²)	Ve(mm ³)	
EC25/18	1	25.50±0.60	19.80min	7.50±0.25	7.50±0.25	6.20±0.20	9.30±0.30	1.077	47.5	44.1	2096	10.68
EC28/21	1	28.50±0.50	21.10min	9.90±0.25	11.40±0.25	6.35+0.15/-0.1	10.50±0.20	0.576	49.6	86.1	4273	22.87
EC28/28	1	28.80±0.50	21.50min	9.90±0.25	11.40±0.25	9.65±0.25	14.00±0.20	0.735	63.2	86.0	5440	28.84
EC28/34	1	28.80±0.50	21.50min	9.90±0.25	11.40±0.25	12.53±0.20	16.90±0.20	0.874	74.7	85.5	6383	32.85
EC29/28	1	29.30±0.60	22.00min	9.90±0.25	11.40±0.25	9.80±0.25	14.00±0.20	0.757	64.3	85.0	5464	29.00
EC29/34	1	29.30±0.60	22.00min	9.90±0.25	11.40±0.25	12.53±0.20	16.90±0.20	0.885	75.3	85.1	6407	33.00
EC35/42	1	35.30±0.50	26.40min	11.30±0.30	11.30±0.40	15.00±0.25	21.00±0.25	0.849	91.8	108.1	9930	50.00
EC35/43	1	35.30±0.50	26.40min	11.30±0.30	11.30±0.40	15.70±0.30	21.70±0.25	0.877	94.6	107.9	10212	51.00
EC39/28	1	39.30±0.50	30.00min	12.70±0.30	12.70±0.30	9.00+0.30	14.20±0.25	0.561	70.8	126.1	8921	45.62
EC39/40	1	39.30±0.50	30.00min	12.70±0.30	12.70±0.30	14.60±0.25	19.80±0.25	0.732	92.8	126.7	11756	59.72
EC39/42	1	39.30±0.50	30.00min	12.70±0.30	12.70±0.30	16.00±0.25	21.20±0.25	0.777	98.4	126.6	12455	63.54
EC42/44	1	42.00±0.80	30.50min	15.20±0.30	15.20±0.30	15.60±0.30	22.20±0.30	0.525	98.5	187.8	18502	93.00
EC49/54	1	49.00±0.80	36.30min	17.25±0.30	17.25±0.30	18.80±0.30	27.00±0.30	0.491	118.6	241.8	28684	149.94
EC70/35	2	70.00±1.70	44.50±1.20	16.80-0.80	16.80-0.80	22.30+0.90	34.65-0.30	0.493	139.5	282.8	39449	242.00

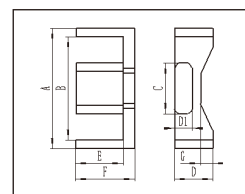


EVD 型磁芯
EVD Type Core



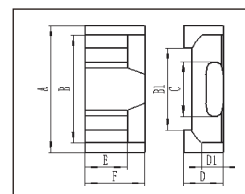
型号 Type	尺寸 Dimensions(mm)							磁芯参数 Core Parameters				Wt
	A	B	C	D	D1	E	F	C1(mm ⁻¹)	Le(mm)	Ae(mm ²)	Ve(mm ³)	(g/pr)
EVD20	20.00 ± 0.40	15.20min	8.80 ± 0.20	12.10max	6.50 ± 0.25	8.00 ± 0.25	10.40 ± 0.30	0.94	50.3	54.1	2723	13.5
EVD23	22.35 ± 0.75	18+0.5/-0.4	7.25+0.2/-0.3	11.70 ± 0.30	7.20+0.2/-0.3	8.90+0.40	11.10+0.40	1.1	56.9	51.5	2937	14.5
EVD25	25.0+0.8/-0.7	18.80min	8.80 ± 0.25	12.45 ± 0.25	8.30 ± 0.30	9.55 ± 0.25	12.60 ± 0.20	0.81	58.9	73.1	4300	21.8
EVD26	26.00 ± 0.4	19.8min	8.80 ± 0.25	12.45 ± 0.25	8.30 ± 0.30	10.15 ± 0.25	13.2 ± 0.20	0.87	63.7	73	4921	47.2
EVD27	26.65 ± 0.6	19.00min	11.25 ± 0.25	14.00 ± 0.30	10.05 ± 0.25	13.00 ± 0.30	16.70 ± 0.30	0.703	74.64	106.16	7924	38.4
EVD36	35.60 ± 1.00	25.40 ± 0.80	15.20 ± 0.20	12.70 ± 0.25	8.90 ± 0.20	16.75 ± 0.25	21.85 ± 0.25	0.73	96.6	131.8	12728	63.8

EFD 型磁芯
EFD Type Core



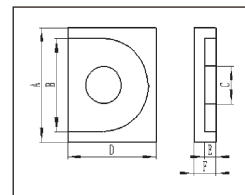
型号 Type	尺寸 Dimensions(mm)							磁芯参数 Core Parameters				Wt
	A	B	C	D	D1	E	F	C1(mm ⁻¹)	Le(mm)	Ae(mm ²)	Ve(mm ³)	(g/pr)
EFD15	15.00 ± 0.30	11.00 ± 0.25	5.30 ± 0.15	4.60 ± 0.15	2.30 ± 0.10	5.50 ± 0.15	7.50 ± 0.20	2.284	34.21	14.98	512.5	2.63
EFD20	20.00 ± 0.55	16.00 ± 0.50	8.90 ± 0.20	6.60 ± 0.15	3.70 ± 0.15	7.70 ± 0.25	10.00 ± 0.15	1.52	47	31	1460	6.96
EFD25	25.00 ± 0.65	18.70 ± 0.60	11.40 ± 0.20	9.10 ± 0.20	5.20 ± 0.25	9.30 ± 0.25	12.50 ± 0.25	0.995	58.01	58.3	3382	16.35
EFD30	30.00 ± 0.70	21.6min	11.40 ± 0.20	12.40 ± 0.20	8.10 ± 0.15	12.25 ± 0.25	16.75 ± 0.25	0.802	75.92	94.62	7183.1	35.7
EFD50	50.50 ± 0.80	38.00 ± 0.80	21.50 ± 0.30	12.00 ± 0.20	7.50 ± 0.10	18.60 ± 0.20	25.80 ± 0.20	0.734	117	159.32	18640.6	93

EPC 型磁芯
EPC Type Core



型号 Type	尺寸 Dimensions(mm)								磁芯参数 Core Parameters				Wt
	A	B	B1	C	D	D1	E	F	C1(mm ⁻¹)	Le(mm)	Ae(mm ²)	Ve(mm ³)	(g/pr)
EPC13	13.30 ± 0.30	10.50min	8.30min	5.60 ± 0.15	4.60 ± 0.15	2.05 ± 0.10	4.50 ± 0.20	6.60 ± 0.20	2.46	30.6	12.5	382	2.23
EPC19	19.60 ± 0.50	16.20 ± 0.50	13.40 ± 0.50	8.20 ± 0.20	6.00 ± 0.20	2.40 ± 0.15	7.25 ± 0.20	9.75 ± 0.20	2.03	46.1	22.7	1050	5.29
EPC25	25.10 ± 0.50	20.50min	16.90min	11.50 ± 0.20	8.0 ± 0.20	4.0 ± 0.2	9.0 ± 0.30	12.5 ± 0.2	1.275	59.2	46.4	2750	13

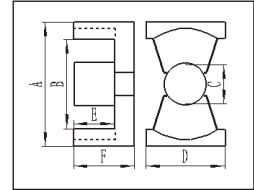
EP 型磁芯
EP Type Core



型号 Type	尺寸 Dimensions(mm)						磁芯参数 Core Parameters				Wt
	A	B	C	D	E	F	C1(mm ⁻¹)	Le(mm)	Ae(mm ²)	Ve(mm ³)	(g/pr)
EP7	9.20 ± 0.20	7.40 ± 0.20	3.40-0.20	6.50-0.30	2.50+0.20	3.80-0.20	1.52	15.7	10.3	162	1.4
EP10	11.50 ± 0.20	9.40 ± 0.20	3.45-0.30	7.85-0.40	3.60+0.20	5.20-0.20	1.7	19.2	11.3	217	2.82
EP13	12.50 ± 0.30	10.00 ± 0.30	4.50-0.30	9.00-0.40	4.50+0.20	6.50-0.20	1.24	24.2	19.5	472	5.1
EP17	18.00 ± 0.40	12.00 ± 0.40	5.85-0.30	11.25-0.50	5.50+0.30	8.50-0.20	0.84	28.5	33.9	966	12.8

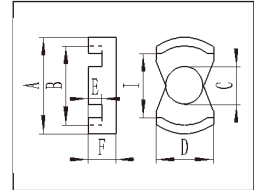


PQ型磁芯
PQ Type Core



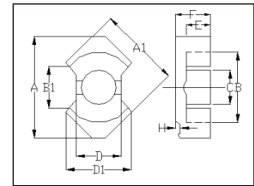
型号 Type	尺寸 Dimensions(mm)						磁芯参数 Core Parameters				Wt (g/pr)
	A	B	C	D	E	F	C1(mm ⁻¹)	Le(mm)	Ae(mm ²)	Ve(mm ³)	
PQ20/14	21.00±0.90	18.00±0.40	8.80±0.20	14.0±0.40	4.35±0.15	7.30±0.10	0.563	34.4	61	2095	12
PQ20/16	21.00±0.90	18.00±0.40	8.80±0.20	14.0±0.40	5.35±0.15	8.30±0.10	0.605	37.4	62	2310	13.13
PQ20/18	21.00±0.90	18.00±0.40	8.80±0.20	14.0±0.40	6.35±0.15	9.30±0.10	0.693	42.4	61	2590	14.34
PQ20/20	21.00±0.90	18.00±0.40	8.80±0.20	14.0±0.40	7.15±0.15	10.10±0.10	0.738	45.4	62	2790	15.4
PQ21/20	20.90±0.5/-0.4	18.40±0.40	8.60±0.20	14.0±0.40	7.60min	10.50min	0.79	47.2	64.3	3030	15.8
PQ26/18	26.50±0.45	22.50±0.45	12.00±0.20	19.0±0.45	4.8±0.20	8.90±0.25	0.346	40.7	119	4790	27.64
PQ26/20	26.50±0.45	22.50±0.45	12.00±0.20	19.0±0.45	6.20±0.20	10.45±0.20	0.391	46.3	119	5490	30.88
PQ26/25	26.50±0.45	22.50±0.45	12.00±0.20	19.0±0.45	8.10±0.20	12.50±0.25	0.472	55.5	118	6530	35
PQ32/18	32.05±0.55	27.50±0.50	13.45±0.25	22.00±0.50	5.25min	9.75min	0.32	52.8	164	8640	40
PQ32/20	32.05±0.55	27.50±0.50	13.45±0.25	22.00±0.50	5.75±0.15	10.40±0.25	0.326	55.5	170	9420	42
PQ32/25	32.05±0.55	27.50±0.50	13.45±0.25	22.00±0.50	8.05±0.20	12.55±0.15	0.409	65	159	10300	48
PQ32/30	32.00±0.55	27.50±0.50	13.45±0.25	22.00±0.50	10.65±0.15	15.17±0.15	0.486	75.3	165	12400	55
PQ35/30	35.1±0.6	32.0±0.50	14.35±0.25	26.0±0.50	10.12±0.20	15.0±0.15	0.42	70.1	168	11769	61
PQ35/35	35.1±0.6	32.0±0.50	14.35±0.25	26.0±0.50	12.5±0.20	17.4±0.15	0.473	79.7	168	13402	72
PQ40/40	40.5±0.9	37.0±0.6	14.9±0.3	28.0±0.6	14.75±0.3	19.9±0.3	0.508	102	201	20500	95
PQ50/50	50.0±1.0	44.0±0.7	20.0±0.35	32.0±0.65	18.1±0.3	25±0.3	0.346	113	328	37200	195

CQ型磁芯
CQ Type Core



型号 Type	尺寸 Dimensions(mm)							磁芯参数 Core Parameters				Wt (g/pr)
	A	B	C	D	E	F	I	C1(mm ⁻¹)	Le(mm)	Ae(mm ²)	Ve(mm ³)	
CQ20/11	21.2±0.40	16.8min	8.2±0.20	12.5±0.30	3.35±0.15	6.05±0.15	13.4min	0.542	31.4	57.9	1818.1	10.45
CQ20/12	21.2±0.40	16.8min	8.2±0.20	12.5±0.30	3.60±0.15	6.30±0.15	13.4min	0.559	32.4	57.9	1875.9	11
CQ20/16	21.2±0.40	16.8min	8.2±0.20	12.5±0.30	5.50±0.15	8.20±0.15	13.4min	0.559	32.4	57.9	1875.9	11.7

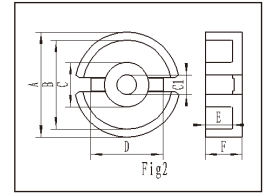
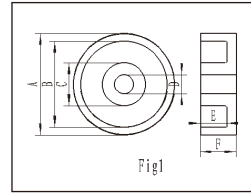
RM 型磁芯
RM Type Core



型号 Type	尺寸 Dimensions(mm)								磁芯参数 Core Parameters				Wt (g/pr)
	A	A1	B	C	C1	D	E	F	C1(mm ⁻¹)	Le(mm)	Ae(mm ²)	Ve(mm ³)	
RM5	14.65±0.25	12.30-0.50	10.20±0.40	4.90-0.20	6.00min	6.60±0.20	3.15±0.20	5.25-0.10	0.93	23.3	25.12	585	3.3
RM6	17.50±0.3	14.40±0.30	12.65±0.25	6.25±0.15	8.40min	7.90±0.30	4.10±0.15	6.20±0.15	0.86	27	31	840	5.42
RM8	22.75±0.45	19.35±0.35	17.30±0.30	8.40±0.15	9.80min	10.80±0.20	5.50±0.10	8.20±0.15	0.59	38	64	2430	12.5
RM10	27.85±0.65	24.15±0.55	10.70±0.20	10.70±0.20	13.60min	13.25±0.25	6.35±0.15	9.30±0.15	0.53	47.96	89.82	4307	23.4
RM12	36.75±0.8	29.25±0.7	12.4±0.4	12.4±0.4	23.5±0.4	16±0.3	8.5min	12.5±0.3	0.4223	60.271	142.72	8601.9	43.3

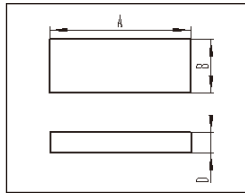


PS 型磁芯
PS Type Core



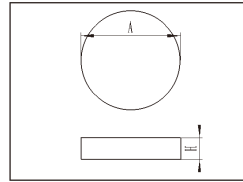
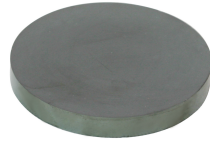
型号 Type	图例 Fig	尺寸 Dimensions(mm)							磁芯参数 Core Parameters				Wt (g/pr)
		A	B	C	C1	D	E	F	C1(mm ⁻¹)	Le(mm)	Ae(mm ²)	Ve(mm ³)	
PS9/5	2	9.3-0.3	7.5+0.3	3.9-0.2	2.0+0.1	5.8-0.3	1.8+0.15	2.7-0.1	1.24	12.5	10.1	126	0.8
PS30	2	30.0±0.5	25.0min	13.3±0.20	5.5±0.10	20.5±0.5	7.0±0.2	10.0±0.2	0.368	47.22	128.47	6066.9	37.24
PS70/15/8	1	70-2.2	57.50+1.80	29.50-1.00		8.5+0.5	9.00+0.60	14.50-1.00	0.13	79.23	609.09	48255	306
PS70/15/22	1	70.00-2.20	57.50+1.80	29.50-1.00		22.00+0.30	9.00+0.60	14.50-1.00	0.166	65.07	393.03	25575	338

I 型磁芯
I Type Core



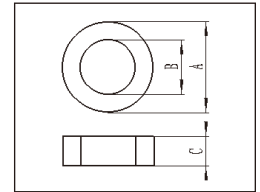
型号 Type	尺寸 Dimensions(mm)			Wt (g/pc)
	A	B	D	
I56/15/5	56.00±0.60	15.00±0.30	5.00±0.20	19.7
I63/15/5	63.00±0.60	15.00±0.30	5.00±0.20	21.94
I66/15/5	66.00±0.60	15.00±0.30	5.00±0.20	23.76
I70/15/5	70.00±0.60	15.00±0.30	5.00±0.20	24.58
I75/15/5	75.00±0.60	15.00±0.30	5.00±0.20	27
I82.5/15/5	82.50±0.60	15.00±0.30	5.00±0.20	28.85
I86/15/5	86.00±0.60	15.00±0.30	5.00±0.20	29
I110/15/10	110.00±0.80	15.00±0.30	10.00±0.30	79.8

FT 型磁芯
FT Type Core



型号 Type	尺寸 Dimensions(mm)		Wt (g/pc)
	A	H	
FT9.8/3	9.80±0.20	3.00±0.10	1.1
FT31.5/5	31.50±0.50	5.00±0.10	18.7
FT41/32	41.0±1.0	32.5±0.25	199
FT50/1.0	50.0±0.5	1.0±0.20	9.2
FT83/10	83.00±1.00	10.00±0.20	260

T 型磁芯
T Type Core



型号 Type	尺寸 Dimensions(mm)			磁芯参数 Core Parameters				Wt (g/pc)
	A	B	C	C1(mm ⁻¹)	Le(mm)	Ae(mm ²)	Ve(mm ³)	
T10/6/5	10.00±0.30	6.00±0.30	5.00±0.30	2.46	24.07	9.785	254	1.2
T12.7/7.9/6.35	12.70±0.40	7.90±0.30	6.35±0.30	2.13	32.38	15.17	491	2.35
T14/8/7	14.00±0.40	8.00±0.30	7.00±0.30	1.6	32.82	20.46	672	3.5
T15.5/10.5/5	15.7±0.4	10.6±0.3	5.00±0.30	3.253	40.268	12.38	498.3	2.49
T18/10/7	18.00±0.5	10.00±0.40	7.00±0.30	1.53	41.53	27.21	1130	5.95
T18/10/8	18.00±0.5	10.00±0.40	8.00±0.30	1.34	41.53	31.09	1291	7
T18/10/10	18.00±0.5	10.00±0.40	10.00±0.40	1.07	41.53	38.87	1614.9	8.5
T18/10/12	18.00±0.5	10.00±0.40	12.00±0.40	0.89	41.53	46.64	1937	10.1
T20/10/8	20.00±0.50	10.00±0.40	8.00±0.30	1.13	43.55	38.44	1674	8.8
T20/10/10	20.00±0.40	10.00±0.30	10.00±0.30	0.91	43.55	48.05	2092	11
T22/11/7	22.00±0.50	11.00±0.40	7.00±0.30	1.29	47.88	36.99	1771	9.7
T22/14/6.5	22.00±0.40	14.00±0.30	6.50±0.30	2.17	56.54	26	1470	10.2
T22/14/8	22.00±0.5	14.00±0.40	8.00±0.30	1.74	54.64	31.46	1719	8.28



型号 Type	尺寸 Dimensions(mm)			磁芯参数 Core Parameters				Wt
	A	B	C	Cl(mm ⁻¹)	Le(mm)	Ae(mm ²)	Ve(mm ³)	(g/pc)
T22/14/12.7	22.00±0.40	14.00±0.30	12.70±0.30	1.09	54.67	49.94	27.30	13.5
T22.5/12.5/8	22.50±0.30	12.50±0.30	8.00±0.20	1.34	51.94	38.87	2019	10.3
T25/15/10	25.00±0.50	15.00±0.40	10.00±0.30	1.26	62.83	50	3141	14.7
T25/15/12	25.00±0.50	15.00±0.40	12.00±0.40	1.02	60.15	58.71	3532	18.3
T25/15/13	25.00±0.50	15.00±0.40	13.00±0.40	0.95	60.18	63.6	3828	19.8
T25/15/15	25.00±0.50	15.00±0.40	15.00±0.40	0.82	60.18	73.39	4417	22.8
T27/11/6	26.70±0.50	11.70±0.40	5.70±0.30	1.17	52.36	44.9	2351	11
T27/11/7	26.70±0.50	11.70±0.40	7.00±0.30	1	52.36	52.38	2743	14.4
T28/12.5/8	28.00±0.50	12.50±0.40	8.00±0.30	0.97	57.21	58.75	3360	17.85
T28/16/13	28.00±0.50	16.00±0.40	13.00±0.40	0.86	65.64	76	4988	25.2
T29/19/15.2	29.00±0.40	19.00±0.30	15.20±0.30	0.98	73.2	74.88	5481	26.6
T30/11/8	30.00±0.50	11.00±0.40	7.60±0.30	0.78	54.75	69.93	3829	22
T31/19/8	31.00±0.60	19.00±0.50	8.00±0.30	1.6	75.49	47.05	3551	18
T31/19/10	31.00±0.60	19.00±0.50	10.00±0.30	1.28	75.49	58.82	4440	22.5
T31/19/13	31.00±0.60	19.00±0.50	13.00±0.40	1.04	75.49	72.8	5493	29
T31/19/15	31.00±0.60	19.00±0.50	15.00±0.40	0.86	75.49	88.22	6660	33.6
T31/19/20	31.00±0.60	19.00±0.50	20.00±0.40	0.64	75.49	117.63	8880	44.8
T32/14/8	32.00±0.40	14.00±0.30	8.00±0.30	0.95	64.64	68.04	4398	24
T36/5/2	36.00±0.60	5.00±0.40	2.50±0.30	1.45	36.86	25.44	938	11.05
T36/23/10	36.00±0.60	23.45±0.50	10.00±0.40	1.47	90.58	63.92	5598	27.53
T36/23/12	36.00±0.60	23.45±0.50	12.00±0.40	1.22	90.58	74.16	6718	33.1
T36/23/15	36.00±0.60	23.45±0.50	15.00±0.40	0.98	90.58	92.7	8390	38
T36/23/20	36.00±0.60	23.45±0.50	20.00±0.40	0.73	90.58	123.6	11196	55.6
T37/22/10	37.00±0.60	22.00±0.50	10.00±0.40	1.21	88.63	73.33	6500	32
T37/22/15	37.00±0.60	22.00±0.50	15.00±0.40	0.81	88.63	110	9749	43
T38/19/13	38.00±0.60	19.00±0.50	13.00±0.40	0.7	82.75	118.67	9820	51.7
T38/19/16	38.00±0.60	19.00±0.50	16.00±0.40	0.7	82.75	146.1	12080	67
T38/19/18	38.00±0.60	19.00±0.50	18.00±0.40	0.57	82.75	164.31	13597	69
T38/19/22	38.00±0.60	19.00±0.50	22.00±0.40	0.41	82.75	201	16600	84
T40/24/5	40.10±0.50	24.00±0.50	5.00±0.30	2.45	96.4	39.38	3796	19.5
T40/24/12	40.10±0.50	24.00±0.50	12.00±0.30	1.02	96.4	94.51	9110	45
T40/24/16	40.10±0.50	24.00±0.50	16.00±0.30	0.77	96.4	126.01	12147	54.6
T45/30/12	45.00±0.60	30.00±0.50	12.00±0.30	1.29	114.64	88.78	10178	49
T45/30/13	45.00±0.60	30.00±0.60	13.00±0.40	1.19	114.58	96.18	11020	52.8
T45/30/16	45.00±0.60	30.00±0.50	16.00±0.40	0.97	114.64	118.37	13570	65.3
T45/30/20	45.00±0.60	30.00±0.50	20.00±0.50	0.77	114.64	147.96	16962	81.6
T47/27/12	47.00±0.60	27.00±0.50	12.00±0.30	0.94	110.49	117	12925	66
T47/27/15	47.00±0.60	27.00±0.50	15.00±0.30	0.76	110.49	146.22	16156	82.5
T49/31.8/12	49.00±0.60	31.80±0.60	12.00±0.30	1.21	123.05	101.61	12503	61
T49/31.8/15	49.00±0.60	31.80±0.60	15.00±0.30	0.97	123.05	127.01	15629	70.5
T49/31.8/19	49.00±0.60	31.80±0.60	19.00±0.40	0.76	123.05	160.88	19796	90.5
T50/30/13	50.00±0.80	30.00±0.60	13.00±0.40	0.95	120.36	127.21	15311	76.8
T50/30/20	50.00±0.80	30.00±0.60	20.00±0.40	0.62	120.36	195.71	23555	117
T57/28.5/28	57.00±0.80	28.50±0.60	28.00±0.50	0.32	124	383.4	47589	250
T60/36/19.7	60.00±0.50	36.00±0.50	19.45±0.25	0.63	144	228	32986.9	150
T60/38/20	60.00±0.80	38.00±0.60	20.00±0.40	0.69	149	216	32100	158
T61/40/10	61.00±1.50	40.00±1.50	10.00±0.50	1.49	154.04	103.46	15936	77.9
T63/38/25	63.00±1.20	38.00±1.00	25.00±0.40	0.5	152.09	305.93	46528.2	234



ご使用上の注意事項 Usage notes

1. 本製品は、一般電子機器(AV 機器、OA 機器、通信機器、家電機器、アミューズメント機器、コンピュータ機器、パーソナル機器、事務機器、計測機器、産業用ロボット) に使用されることを意図しており、宇宙・航空・原子力・燃焼制御・運輸・交通・各種安全装置・医療機器のように、高度な安全性や信頼性が必要とされ、または機器の故障、誤動作、不具合が人への生命、身体や財産等に損害を及ぼす恐れがあり特別な品質や信頼性が要求される場合は、御社で安全性や信頼性、品質等を確認しご使用下さい。なお、本製品を汎用標準的な用途で使用されるに際し、更により安全性を確保する為に保護回路、装置の確保やバックアップ回路を設ける等の配慮をお願いします。

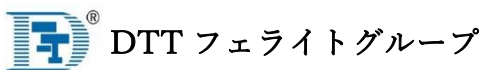
This product is intended for use in general electronic equipment (AV equipment, OA equipment, communication equipment, home appliances, amusement equipment, computer equipment, personal equipment, office equipment, measuring equipment, industrial robots). such as aerospace, aviation, nuclear power, combustion control, transportation, traffic, various safety devices, and medical equipment, where a high degree of safety and reliability is required, or failure, malfunction, or malfunction of the equipment can endanger human life. , If special quality or reliability is required due to the risk of bodily injury or property damage, please confirm safety, reliability, quality, etc. before use. In addition, when using this product for general-purpose standard applications, in order to further ensure safety, please consider securing protection circuits, devices, and providing backup circuits.

2. 製品をより正しく、安全にご使用いただくために、さらに詳細な特性・仕様をご確認いただける納入仕様書をぜひご請求ください。記載内容は、改良その他により予告なく変更する場合がありますので、あらかじめご了承ください

In order to use the product more correctly and safely, please request a delivery specification sheet that allows you to check more detailed characteristics and specifications. Please note that the information contained herein is subject to change without notice due to improvements or other reasons.

3. 本書に記載された製品についてのお問合せ、ご相談は下記までお願いいたします。

Please contact the following for inquiries and consultations regarding the products described in this document.



DTT-Ferrite Group.

URL: <https://www.dtt-f.com> URL: <https://www.otequ-hk.com>

E-mail: hara@dtf-f.com

○山東東泰電子科技有限公司

Shandong Dongtai Electronic Science and Technology Co., Ltd.

○山東東泰方思電子有限公司

Shandong DTT-First Electronic Co., Ltd.

○欧特科有限公司

Otequ (HK) Limited.

○広州市小笠原貿易有限公司

Ogasawara Trading (Guangzhou) Inc.

